



Welcome to Millfield LEAD Academy



Welcome

- ▶ On behalf of everyone here, *welcome* to a new and exciting stage in your child's life.
- ▶ During this year your child will make lots of new friends and enjoy many exciting experiences.
- ▶ They will also learn the vital new skills of reading, writing and mathematics.
- ▶ Working as partners, we have the chance to ensure that your child will have a positive attitude towards their education as we provide them with the solid foundations needed to become independent and lifelong learners.

Outline of the Meeting

- ▶ To cover some general information that will be useful to know before starting.
- ▶ To share how to access additional information.
- ▶ The admission process and forms that need completing.
- ▶ The transition process and visits.



Admission forms

- ▶ Complete and return next week or via the nursery/school office.
- ▶ Once we have them we can make contact with any pre-school providers
- ▶ We can then allocate children into classes

- ▶ There will be several other forms to complete but we will send a link to these electronically.

School Times

- ▶ Our school gates will open at 8:40 am
- ▶ The school day will begin at 8:50 am
- ▶ Lunch is between 11:30 am to 12:30 pm
- ▶ School finishes at 3:20 pm (gates reopen at 3.15 pm)
- ▶ If you are arriving after the start of the school day, you must take your child to the office and they will be taken to the classroom.



Collection



- ▶ Please make sure all children are collected by a named, responsible adult.
- ▶ Inform the office if someone different, or not named on the collection form, is picking your child up.
- ▶ We will ask you to kindly send photos of the people on your collection forms, including yourselves, as this helps us to become familiar with faces quicker.
- ▶ We will line the children up outside the unit and then dismiss them to you from behind a barrier.

School Uniform

- ▶ We would be grateful if you could make sure ALL clothes are labelled with your child's name.
- ▶ Uniform is available to purchase from the office if you want items of clothing with the school logo.
- ▶ Alternatively, you can also purchase the appropriate colour uniform from any of the major supermarket.
- ▶ We always encourage children to dress and undress themselves to develop their independence skills.



School Uniform

Uniform:

- ▶ White shirt, blouse or polo shirt;
- ▶ Navy jumper or cardigan;
- ▶ Dark grey or black skirt or pinafore dress;
- ▶ Dark grey or black trousers or shorts;
- ▶ Summer dresses or skirts (blue gingham)
- ▶ White socks or grey tights
- ▶ Black shoes



We encourage children to have a spare bag of clothes at school if possible, especially if your child is still prone to having toileting accidents.

PE Kit

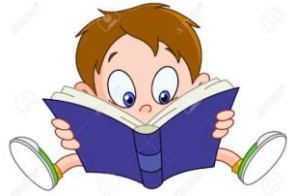
- ▶ Children will need to come to school wearing their PE kit on their PE day (Monday).
- ▶ We again ask that their PE kit is clearly labelled.
- ▶ Children will do indoor PE in the hall and this will be in bare feet.
- ▶ Please do not allow your children to wear jewellery unless it is for religious reasons. If your children do have earrings, then these must be covered up or taken out on PE days.
- ▶ If they need to be covered up, we recommend parents use micropore tape which you will need to provide yourself.

PE Kit

Uniform:

- ▶ White shirt;
- ▶ Black shorts;
- ▶ White socks;





Book Bags



- ▶ Please ensure your child has their book bag at school everyday.
- ▶ Book bags can be purchased from the office.
- ▶ We ask that you get a standard sized book bag as it makes our job a lot easier when sorting out homework and reading books and they can be collected in a box.
- ▶ No key chains/toys on bags please.

Monday ✓

Tuesday ✓

Wednesday ✓

Thursday ✓

Friday ✓



Lunchtimes

- ▶ Children are entitled to a free school meal in EYFS, year 1 and year 2.
- ▶ Meals will be served and eaten in the hall.
- ▶ Parents need to fill out the food menu form and return to the office at least 2 weeks in advance.
- ▶ Children will wear a coloured band to help the kitchen staff know which food has been ordered for them on that day.
- ▶ If you have ordered a meal this will be served to your child – please do not send a packed lunch in as we will not give this to your child and return it to you at the end of the school day.



Packed Lunches

- ▶ If you choose for your child to have a packed lunch, they will eat in the hall also. Please make sure their bag is labelled.
- ▶ We are a healthy school so certain things are not allowed to be eaten at school.
- ▶ No sweets, chocolate, fizzy drinks or nuts.
- ▶ The children are looked after by lunchtime supervisors during this time.
- ▶ Try and get your child to help packing their lunchbox so they are aware of what is in it.
- ▶ Children will have their own playground space to play on after eating and have access to play equipment.



Healthy Me



- ▶ We ask that your child brings a water bottle with them everyday and that it is clearly labelled.
- ▶ We provide free milk until your child turns 5. You will need to register at with Cool Milk. (Form in pack)
- ▶ Children will have a snack provided in the afternoon, which will be a piece of fruit.




- ▶ We are a nut free school and this includes no chocolate spread in children's packed lunches.



Medical Matters



- ▶ Absences - if your child is unwell, please contact the school by telephone (2897151). Leave a message on the 24 hour answer machine.
- ▶ Medicines can only be administered by prior arrangement. Fill out a form at the office. 
- ▶ Medicines must be in the original container - clearly labelled with the child's name, dosage to be given, frequency and the name of drug.
- ▶ Inhalers - if your child suffers from asthma, please complete the asthma form and give the class teacher the form and a labelled inhaler.



Medical Matters continued

- ▶ Allergies - please inform us of any allergies.
- ▶ Head lice can be a common and unwanted nuisance at this age. Please check regularly and treat as recommended.
- ▶ Chicken pox - children can return to school as soon as the blisters have crusted over. You do not need to wait until they have disappeared.
- ▶ Coughs/colds/sore throat/ headache - give the children some calpol and they can come to school.

First Aid

- ▶ Children will, probably, end up having some bumps and grazes while at Millfield and especially in the EYFS as they are mixing with more children, exploring and being increasingly active.
- ▶ If we have administered first aid to your child you will get an email informing you. You **DO NOT** need to contact the school - if it is significant or we feel medical advice is needed we will telephone you.

Executive Functioning and Behaviour

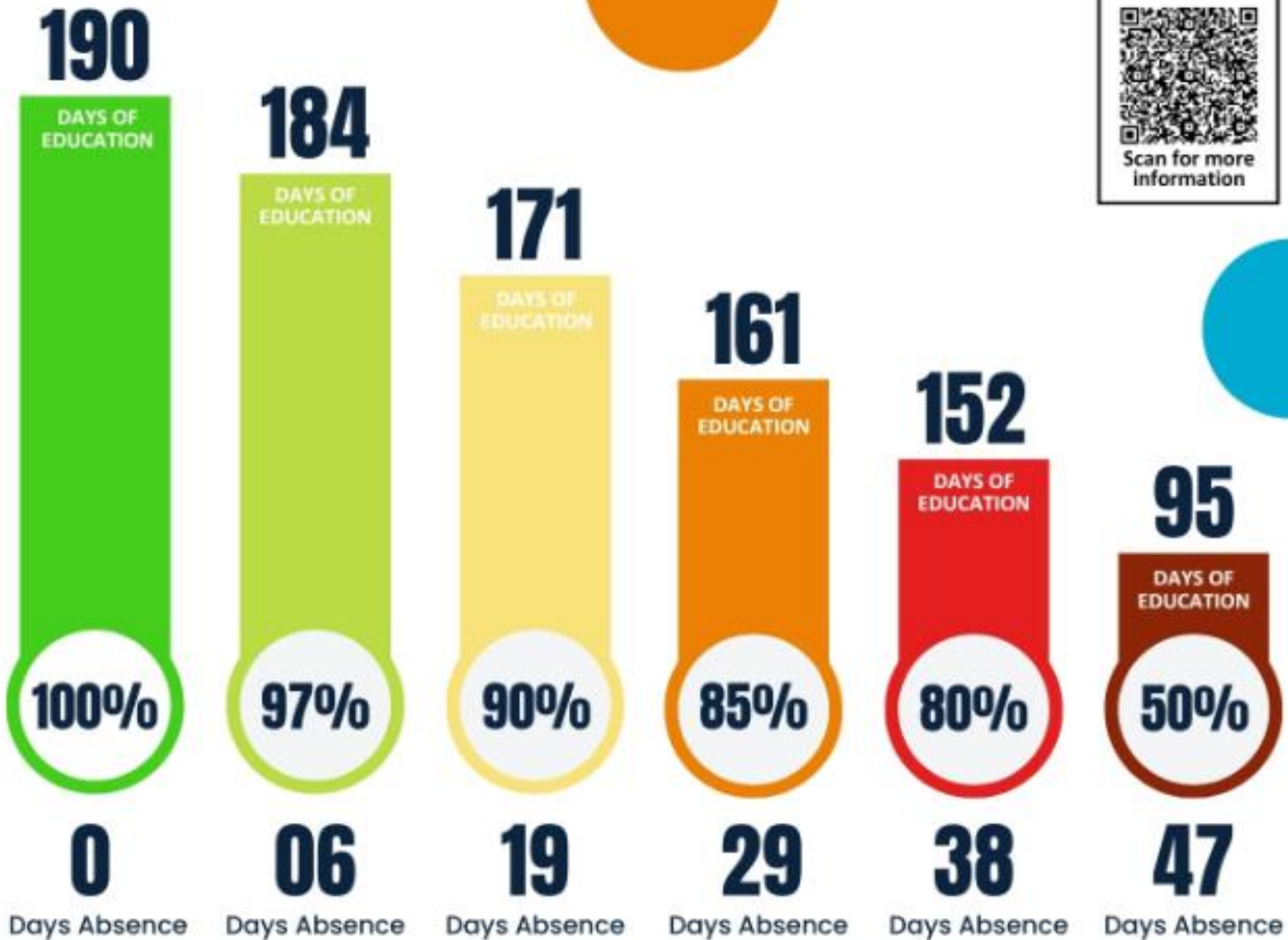
- ▶ Executive functioning is the ability to make decisions, socially interact and regulate emotions. We will support your child to develop these key skills through a range of strategies. Children develop at different rates and will still be learning routines and how to interact appropriately. There will be falling outs, bumps and scrapes and occasionally times where children may push or snatch toys/equipment. Our aim will be to help the child make better choices and to learn from these behaviours.
- ▶ There may be occasions where your child is being rough/boisterous while playing. They will be spoken to and guided to make better choices. However, if they need more support they may be kept inside at break/lunchtime for a period of time while adults do this development work with them.

Attendance

- ▶ Attendance is really important. There is a direct link between children who attend school more often and their levels of progress and attainment.
- ▶ In EYFS it is crucial for children to attend as much as possible so they can develop socially as well as academically.
- ▶ Children make friends for future years while in EYFS.
- ▶ It establishes good habits for the rest of their education and into their working lives.
- ▶ Try and make all doctors/dentist appointments outside of school hours. If this is not possible the child should come to school either side of the appointment - they do not need a full day off school to attend an appointment
- ▶ They will get coughs and colds - this is normal and does not mean they cannot come to school.

Can my child come to school?

- ▶ Cough/cold Yes
- ▶ Sore throat Yes
- ▶ Hayfever Yes
- ▶ Feeling tired Yes
- ▶ Headache Yes
- ▶ Has head lice Yes - once treated
- ▶ Conjunctivitis Yes
- ▶ Broken bone Yes
- ▶ Is on antibiotics Yes
- ▶ Has chicken pox No - until blisters have crusted over
- ▶ Has been sick No
- ▶ Has had diarrhoea No



and every minute counts...



Indoor Area



Writing Area



Maths Area



Creative Area



Role Play.



Small World



Reading Area



Outdoor Area



Play cabin



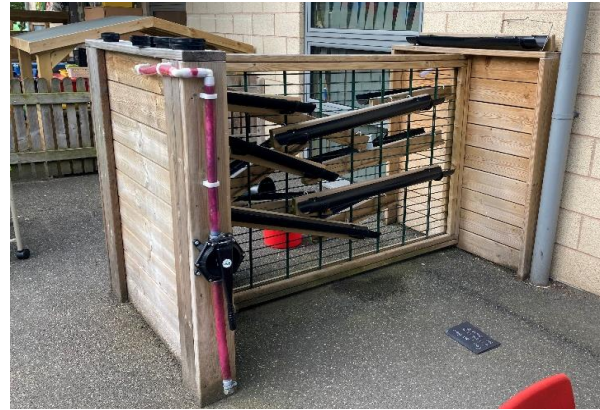
Performance Stage



Construction Area



Trim Trail



Water wall



Mud kitchen

Mix of adult-led and child initiated activities

- ▶ We have a mixture of adult-led and child initiated activities.
- ▶ All children will be expected to take part across the 7 areas of learning throughout the week.
- ▶ Where possible, activities will be linked around our theme for the week.
- ▶ A stimulating environment allows the children to rehearse the skills learnt in order to master them.
- ▶ Lots of activities will be presented in a practical way to support the children's concrete understanding of concepts.

How to help your child with the transition to school.

- ▶ Talk positively about all the fun they going to have.
- ▶ Help them to practise getting dressed and undressed on their own.
- ▶ Encourage them to be less dependent on you by waving to them as you leave and by not extending the goodbye.
- ▶ Say to them that you will see them later at home time when you come pick them up to reinforce this is a temporary stay.
- ▶ Help them learn to fasten their coat and do their shoes independently. Ideally we prefer children to have Velcro or buckles that they can quickly learn to do themselves as doing 60 pairs of shoe laces is very time consuming for staff.



Class Dojo



- ▶ We use Class Dojo as a secure way of communicating messages, including links to videos to support homework and to give an overview of learning at school.
- ▶ Parents can upload videos and photos of activities and learning children do outside of school on a private story for just your individual child that only you and the teacher can see.
- ▶ We will use this information towards building a more complete picture of what your child can do when making judgements about how your child is progressing towards the ELGs.
- ▶ You will receive log in details once your child starts school and then you can set up an app on your phone to get updates about the dojo-smilies (rewards points) your child earns while at school.

A Typical School Day

- ▶ 8:40 - School Gates Open
- ▶ 8:50 - Register and spelling practice
- ▶ 9:00 - Phonics
- ▶ 9:30 - Carousel 1 Activities and Small group Adult-Led Learning
- ▶ 10:00 - Carousel 2 Activities and Small group Adult-Led Learning
- ▶ 10:30 - Carousel 3 Activities and Small group Adult-Led Learning
- ▶ 11:00 - Tricky Word Reading / Captions
- ▶ 11.30 - Lunch
- ▶ 12:30 - Register and Maths Mastery Groups
- ▶ 1:00 - Continuous Provision Activities + Little Wandle Reading Groups
- ▶ 2:00 - Playtime (milk and fruit)
- ▶ 2:20 - Continuous Provision Activities + Little Wandle Reading Groups
- ▶ 3:00 - Story Time
- ▶ 3.20 - Home Time

The First Few Weeks

- ▶ We find out what the children already know and can do and use this information to help us plan their next steps in their learning. We will have read all the transition pack information sent in.
- ▶ We build positive relationships with your children so they feel safe and secure and help them become familiar with where everything is in the environment.
- ▶ We complete the National Reception Baseline and use this information to organise our carousel groups, phonic groups, and maths mastery groups.

The Website

- ▶ The starting school page has lots of information about EYFS and copies of this presentation and the booklet.

Next week

- ▶ Wednesday at 5.30 pm
- ▶ Bring your child
- ▶ Informal drop in where you and your child can visit the classroom, play and ask the staff any questions you may have.
- ▶ Bring back the completed pack along with a copy of your child's birth certificate/passport.

Thank you for coming

- ▶ Thank you for coming. If you have any questions you are welcome to speak to any of us at the end and we'll do our best to answer them.